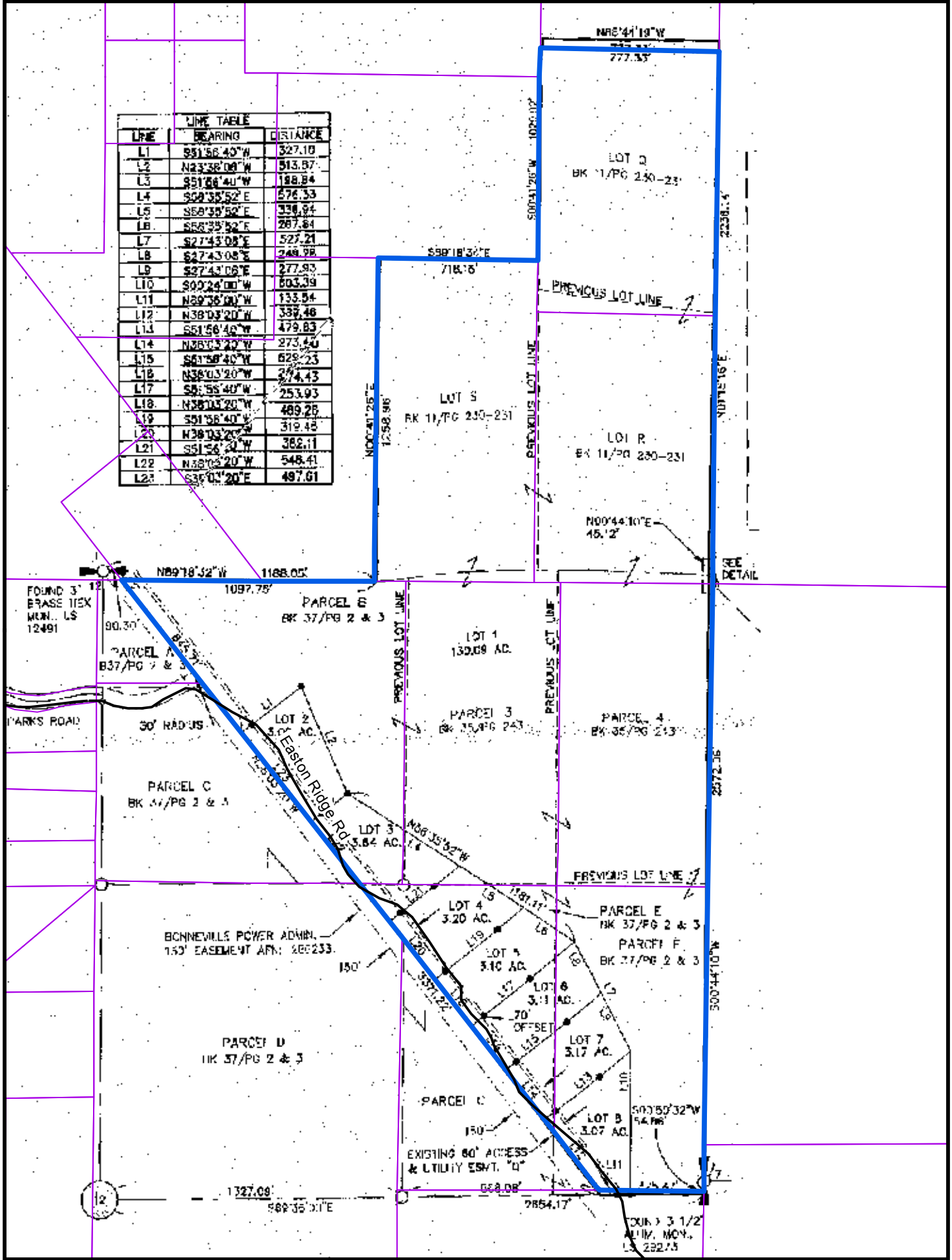


LINE	BEARING	DISTANCE
L1	S51°58'40"W	327.10
L2	N23°38'00"W	513.87
L3	S51°58'40"W	188.84
L4	S62°35'52"E	576.53
L5	S58°35'52"E	336.84
L6	S58°35'52"E	267.64
L7	S27°43'08"E	527.21
L8	S27°43'08"E	248.88
L9	S27°43'08"E	277.93
L10	S00°24'00"W	503.39
L11	N29°36'00"W	133.54
L12	N38°03'20"W	338.46
L13	S51°58'40"W	479.83
L14	N28°03'20"W	273.40
L15	S61°58'40"W	628.23
L16	N38°03'20"W	274.43
L17	S8°55'40"W	253.93
L18	N38°03'20"W	489.26
L19	S51°58'40"W	312.45
L20	N38°03'20"W	382.11
L21	N38°03'20"W	548.41
L22	N38°03'20"W	497.61
L23	S35°03'20"E	497.61



12

FOUND 3 1/2
INCH MON.
LS 232.15